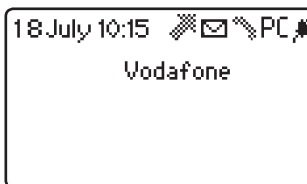


The standby screen

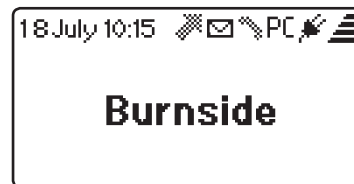
When the phone is not involved in a call or any other operation, it will display a screen similar to one of those shown below. In addition to the time, date, signal strength and other status icons, you can choose to make it show the network name, a big clock or a banner. Use the Settings option within the menu to determine which standby screen is displayed - please refer to the full user guide for details.



Standby screen showing network name



Standby screen showing the big clock



Standby screen showing the banner

This quick start guide will help you to set up, switch on and begin using your P355 desktop mobile phone. For further information, please refer to the full user guide supplied with the product.

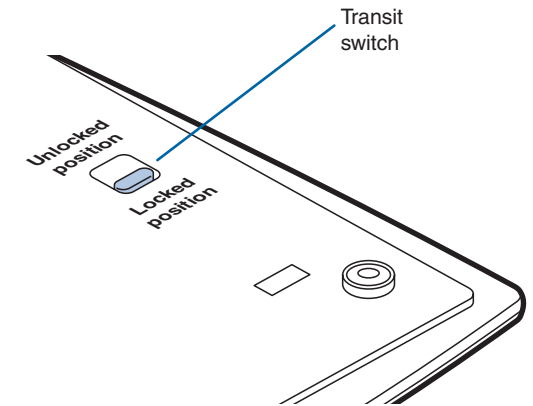
Setting up

Unlock the transit switch

When shipped, your phone is locked for transit to prevent it from powering on accidentally. You need to unlock the phone before it will operate.

- 1 On the underside of the phone, locate the recessed switch near to where the handset cable attaches.
- 2 Slide the switch towards the rear of the phone.

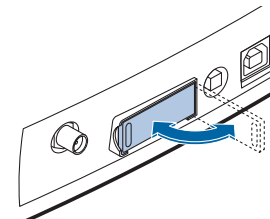
The phone will not switch on at this stage.



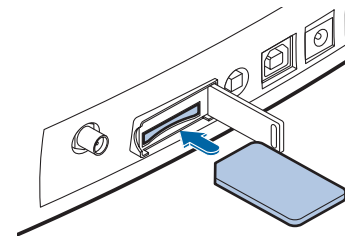
Install your SIM card

Note: Ensure the phone is switched off.

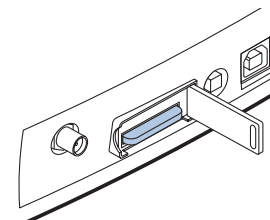
- 1 On the rear panel of the phone, carefully swing open the SIM slot door.



- 2 Orientate your SIM card with its contacts facing downwards and the notched corner facing towards the slot.



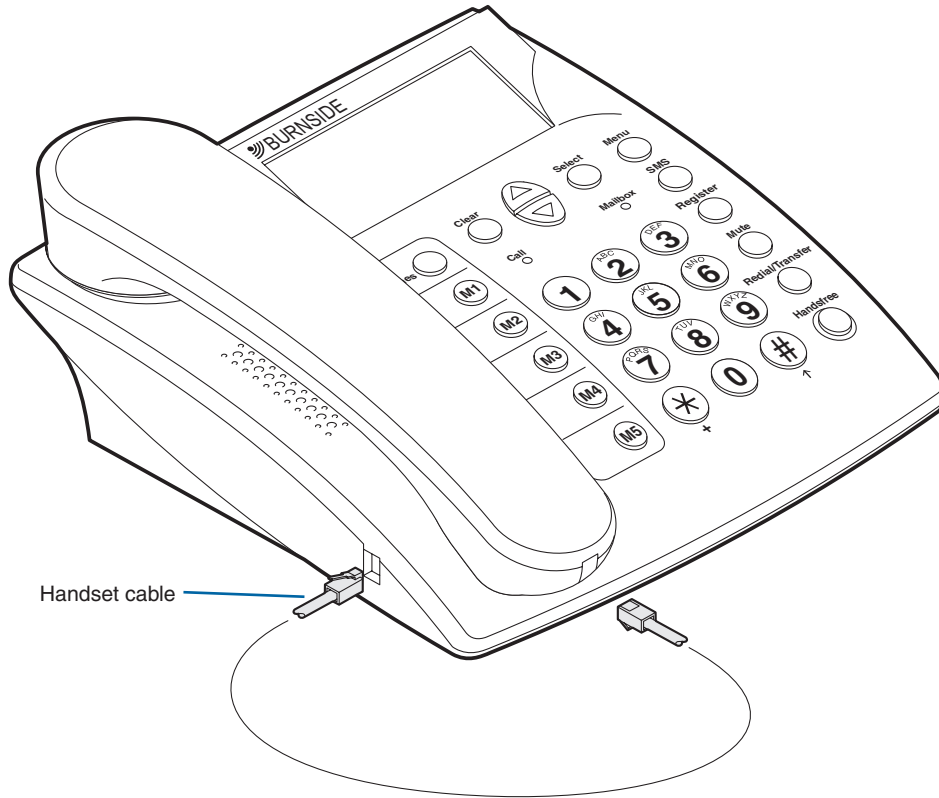
- 3 Push the SIM card into the slot until it clicks into place. Close the door.



Note: To remove the SIM card, press it inwards to release and partially eject it. Then slide it out of the slot.

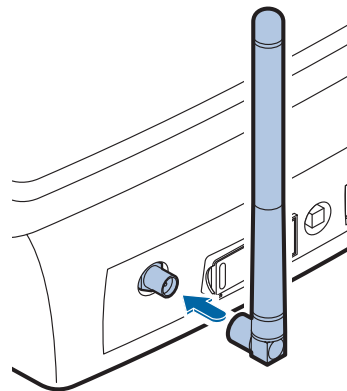
Attach the handset cable

- 1 Locate the handset and the supplied cable.
- 2 Connect one end of the cable to the socket at the base of the handset and the other end to the socket in the left side of the phone. Each connector will click into place once inserted correctly.



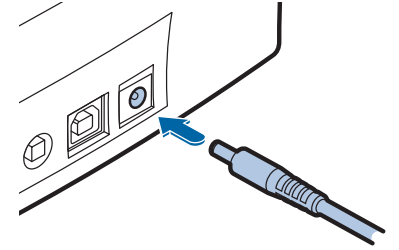
Attach the antenna

- 1 Align the supplied antenna (or another suitable GSM antenna) with the circular connector on the far left of the rear panel.
- 2 Attach the antenna and twist the connector collar clockwise until it is finger-tight - do not overtighten.
- 3 In use, the antenna should always be vertical. The supplied antenna has a hinge so that you can position it correctly.



Attach the power adapter

- 1 Attach the connector from the power adapter to the socket on the far right of the rear panel.
- 2 Plug the power adapter main body into a nearby mains outlet and ensure that the outlet is switched on.



Switch on

- 1 On the rear panel, press and hold the red button until the display responds, then release.

Notes:

To switch off, press and hold the red button until the display goes blank.

During normal use, the phone should only be switched on and off using the red button. Only use the transit switch once the unit has been turned off.

If the transit switch is inadvertently moved to the locked position, the phone will immediately shut off or enter a charging state if the power adapter is connected.

